

2/1 Tathra Place, Gymea, NSW 2227



Townhouse For Sale

Tuesday, 14 November 2023

2/1 Tathra Place, Gymea, NSW 2227

Bedrooms: 2

Bathrooms: 2

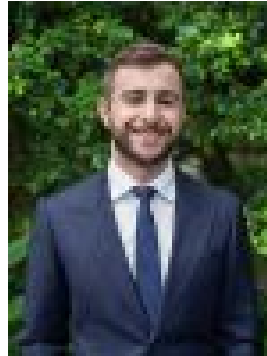
Parkings: 1

Area: 107 m2

Type: Townhouse



Dino Salvatore
0295258066



Marcus Salvatore
0433388862

For Sale

Set in the highly renowned 'One Tathra Place' complex, this modern townhouse presents quality low maintenance living to first home buyers or investors. The timeless design features two generous bedrooms on the first floor with a generous open plan living & dining area that centers around the kitchen on the entry level. Plus, the paved courtyard seamlessly integrates with the internal living areas to accommodate grand-scale entertaining. Main Features Include: • Open plan living & dining rooms opening to outdoor terrace • Kitchen with island bench & quality appliances including gas cooktop • Two good sized bedrooms with built-in robes, main with ensuite • Central main bathroom with separate bath & shower • European laundry upstairs + powder room downstairs • East facing paved outdoor terrace • Single car space in basement car park • Approximate Lot Size: 107sqm (Unit 91sqm + Garage 16sqm) • Approximate Fees: Strata \$1680pq | Council \$368pq | Water \$255pq Set close to the local cafe, North West Medical Practice, South Village, Gymea Village, Gymea Station, Gymea Bay Public School & in the Kirrawee High School catchment.