

2/106 Derby Drive, Epping, Vic 3076



Unit For Rent

Friday, 9 February 2024

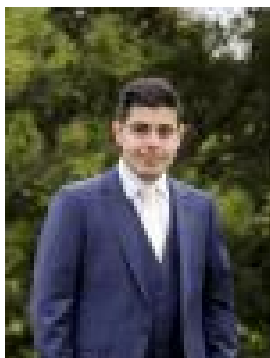
2/106 Derby Drive, Epping, Vic 3076

Bedrooms: 2

Bathrooms: 1

Parkings: 1

Type: Unit



Julian Cannavo

0450105129

\$400pw / \$1733pcm

Set quietly amongst the friendly neighbourhood of central Epping, this home provides a variety of amenities only moments away, such as Derby Meadows Pre School, Meadow Glen Primary School, Epping Secondary College, Greenbrook Plaza, Epping Train Station and only just up the road from Plenty Valley Westfield and South Morang Train Station. It offers a comfortable living space with two carpeted bedrooms equipped with built-in robes, providing ample storage. The open-plan layout includes a tiled lounge, kitchen and adjoining meals area, creating a cohesive and inviting atmosphere for relaxation and dining. The kitchen has new Chef gas appliances and ample bench and cupboard space. The bathroom has been renovated, and there's a separate laundry for convenience. Enjoy gas heating and the warmth and cooling of the new split system air conditioner. A private backyard perfect for entertaining, plus a side driveway to a lock-up garage, complete the picture. Be quick, as this property won't last long!