

2/112 Shirley Road, Wollstonecraft, NSW 2065

Raine&Horne.

Sold Apartment

Friday, 13 October 2023

2/112 Shirley Road, Wollstonecraft, NSW 2065

Bedrooms: 1

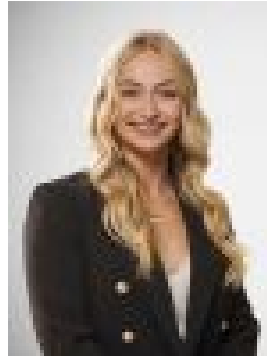
Bathrooms: 1

Parkings: 1

Type: Apartment



Glenn Foster
0283187888



Scarlett Stinton
0283187888

Contact agent

Discover the perfect blend of comfort, convenience, and tranquillity of this entry level apartment in the top end of Wollstonecraft. Tucked away at the side of the block and away from any noise, it offers a haven of privacy and abundance of natural light. With a thoughtfully designed layout, this apartment maximises space and functionality, making it an ideal sanctuary for first home buyers, investors, or for those that want convenience and have a restaurant appetite.- Spacious bedrooms with built ins- Car space on title, internal laundry- Updated kitchen, stainless steel appliances, lots of overhead cabinetry- Floating timber floors, abundance of natural light- Convenience of urban living, moments away from transport- Shops and eateries just a short stroll away- Crows Nest Metro coming soon