

**2/129 Cardinal Road, Glenroy, Vic 3046**



**Sold Townhouse**

Thursday, 29 February 2024

2/129 Cardinal Road, Glenroy, Vic 3046

**Bedrooms: 3**

**Bathrooms: 2**

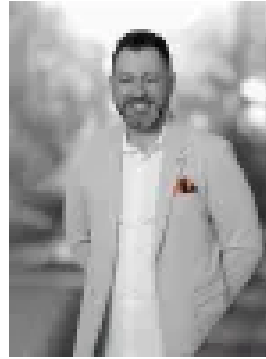
**Parkings: 3**

**Area: 255 m2**

**Type: Townhouse**



Marwan Abdulwahed  
0420647396



Frank Antonello  
0404999064

**\$870,000**

Step into 2/129 Cardinal Road, Glenroy, where contemporary living meets convenience in this rear Dual-Occ Townhouse. Nestled in a highly sought-after area, just moments from the Northern Golf Club, this residence offers the ideal blend of low-maintenance living similar to a unit, while still being spacious like a true family home. Boasting 3 bedrooms and 2 bathrooms, this well-planned Townhome features seamlessly flowing open-plan living areas, creating an inviting atmosphere for both daily life and entertaining. The gourmet kitchen is a culinary enthusiast's dream, with top appliances, a practical walk-in pantry, and a sizable breakfast bar for social gatherings. Step outside to the covered and paved patio, perfect for BBQ evenings and shared moments of laughter with loved ones. Surrounded by parks, schools, shops, eateries, and excellent transport options catering to growing families seeking minimal upkeep and more personal time. Welcome to 2/129 Cardinal Road - where comfort, style, and ease await. Make your move today - Contact C+M Residential. 'Helping You Find Home'

**THE UNDENIABLE:** • Brick & Rendered Dual-Occ Townhouse • Built-in 2018 approx. • Land size of 255m<sup>2</sup> approx. • Building size of 24sq approx. • Foundation: Concrete slab

**THE FINER DETAILS:** • Kitchen with S/S 900mm Smeg appliances including a Bosch dishwasher, walk-in pantry, 2-tone cabinetry, stone benchtops, breakfast bench with pendant lighting, ample cupboard space, finished with New England Blackbutt flooring • Sizeable open-plan meals & living zone with New England Blackbutt flooring • Retreat or Study/Home office with New England Blackbutt flooring • 3-Bedrooms with robes & New England Blackbutt flooring, master with full ensuite • 2-Bathroom with shower, bathtub to ensuite, single & double vanities, combined toilet & tiled flooring • Powder room with single vanity • Laundry with single trough • Ducted heating & refrigerated cooling • Additional features include a security alarm system, CCTV, high ceilings, LED lighting, roller blinds & curtains, frosted glass, ample storage areas, timber staircase, plus so much more • Landscaped gardens with a courtyard, covered & paved patio, trees, garden beds & lawns • Double remote garage with rear roller door & internal access • Potential Rental: \$700 - \$750 p/w approx.

**THE AREA:** • Close to Glenroy Shopping Village. Glenroy, Gowrie & Oak Park train station, & bus hub • Surrounded by parks, reserves & schools, plus Northern Golf Club • Only 12.5km from the CBD with easy City Link, Ring Road, & airport access • Zoned Under the City of Merri-bek - Neighbourhood Residential Zone

**THE CLINCHER:** • Spacious, modern living, & unbeatable convenience • A gourmet kitchen with Smeg appliances & a walk-in pantry, cooking never looked this good!

**THE TERMS:** • Deposit of 10% • Settlement of 30/45/60 days Secure your INSPECTION Today by using our booking calendar via the REQUEST INSPECTION button... \*All information about the property has been provided to C+M Residential by third parties. C+M prides itself on being accurate, however, has not verified the information and does not warrant its accuracy or completeness. Parties should make and rely on their own inquiries in relation to this property.

Marwan Abdulwahed: 0420 647 396  
Frank Antonello: 0414 567 768