

2/13 Balmoral Crescent, Rippleside, Vic 3215

McGrath

Sold House

Wednesday, 14 February 2024

2/13 Balmoral Crescent, Rippleside, Vic 3215

Bedrooms: 4

Bathrooms: 2

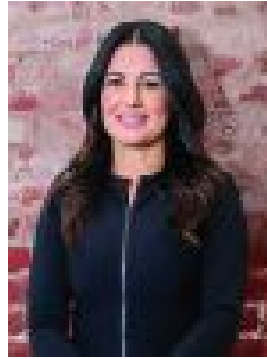
Parkings: 2

Area: 170 m2

Type: House



David Cortous
0416164336



Candice Costoso
0431577870

\$1,750,000

A rare opportunity has been presented on one of Geelong's most tightly held and exclusive waterfront locations, the beautiful Balmoral Crescent. Taking in the stunning views over the tranquil waters of Corio Bay, the Royal Geelong Yacht Club and across to the CBD. This is a piece of Victoria's most prized and rare real estate. Beautifully presented, you will be captivated by the view from the open-plan living room that offers space and an abundance of light reflecting neutral tones. The home has been fully renovated to the level one would expect of an upmarket bayside residence and boasts two large living spaces, four generous bedrooms, a master suite with a large ensuite and a walk-in robe. The central kitchen is the centerpiece of the home; beautifully appointed with stone benchtops, Miele appliances and handsome cabinetry, perfect for those who love to entertain. The unique property is one of only four exclusive residences perched on a large flat block, has direct pool access, and offers a large living area set over one level, ideal for those looking for ease of living. The gardens are perfectly manicured and add another layer to this exquisite offering. Everything has been considered here for ease of living, security, heating and cooling, electric secure gates, single carport and a remote single lock-up garage. The lifestyle attached to this amazing single-level home is the most sought-after in the region, offering the very best of dining, cafes, restaurants, bay activities and the CBD, all within walking distance. - Victoria's most prized waterfront location - Master suite with large ensuite and walk-in robe - Large living space boasting stunning views across the bay and beyond - Beautifully presented and well-appointed, ready to move in - Single carport, and single remote lock-up garage - Offering excellent security and all mod-cons