

2/13 Winston Avenue, Stuart Park, NT 0820



House For Sale

Saturday, 20 January 2024

2/13 Winston Avenue, Stuart Park, NT 0820

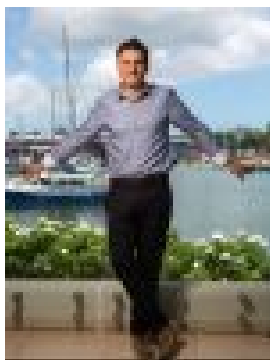
Bedrooms: 3

Bathrooms: 2

Parkings: 2

Area: 347 m2

Type: House



Nick Scaturchio

Offers Over \$599,000

Pacific Property Darwin is proud to present 2/13 Winston Avenue, Stuart Park – a magnificent freestanding townhouse boasting a substantial 347m² on title, primed for the discerning buyer.* Three bedroom, two bathroom freestanding residence in the heart of Stuart Park* Large outdoor grassed area, perfect for entertaining or for the kids to play* Freshly painted interior offers a pristine, inviting ambiance in the residence* Open-plan living seamlessly connects to undercover patio for alfresco dining* Modern kitchen with neutral tones, loads of bench space and ample storage* Upstairs offers three generous sized bedrooms, all featuring built in robes* Large double carport, storage room, and a charming outdoor pizza oven* Conveniently located near shops, schools, Darwin CBD and the Waterfront* Perfectly suited for owner-occupiers, first home buyers, and investors alike. Discover the epitome of urban living in this stunning Stuart Park residence. The ground floor boasts an expansive living area leading to a verdant courtyard, providing a serene retreat from city life. The notable feature of this home is its generous outdoor space, offering a rare blend of urban convenience and suburban tranquility. Ascend to the upper floor to find three generously proportioned, air-conditioned bedrooms, each fitted with built-in robes, alongside a stylish, contemporary bathroom. The thoughtful design includes a separate toilet for added practicality. Set in a serene and well-maintained complex of only four, this impressive townhouse is a true gem, offering the pinnacle of low maintenance living just a short distance from the heart of Darwin. Additional features include large double carport and security screens for added peace of mind. Embrace a lifestyle where morning walks, cycling along scenic paths, and enjoying the local cafes are part of your everyday. If this sounds like your ideal living scenario, then 2/13 Winston Avenue, Stuart Park should be at the top of your list. For more information or to view 2/13 Winston Avenue, Stuart Park, contact your local Pacific Property Darwin real estate specialist: Nick Scaturchio, 0433 038 633