

2/1304 Pacific Highway, Turrumurra, NSW 2074



Unit For Rent

Friday, 12 April 2024

2/1304 Pacific Highway, Turrumurra, NSW 2074

Bedrooms: 1

Bathrooms: 1

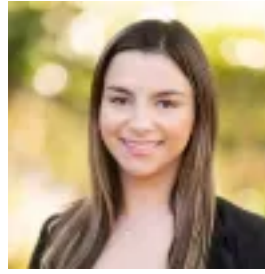
Parkings: 1

Area: 4000 m2

Type: Unit



Ray White Upper North Shore Leasing
0294499066



Isabella Daaboul
0294499066

\$600 per week

The ultimate village-side pad, this exceptional apartment enjoys an easy access elevated ground floor position with a private entry and proportions that are exceptional. Renovated throughout with bespoke finishes, tenants will appreciate its abundance of style and its flexible floorplan that includes a large formal dining, home office or 2nd living. The feel is sophisticated and moody with LED lighting set into a dropdown ceiling and a striking kitchen with breakfast bench. The apartment comes with an over-sized lock up garage and storage. Indulge in a village lifestyle an easy stroll to the local shops and eateries, multiple bus services and the rail. Accommodation Features: * Solid full brick build, contemporary flooring, high ceilings * Sweeping and open plan living with adjoining sitting area * LED lighting set into a ceiling bulkhead creates mood, a/c * Stylish timber topped kitchen, breakfast bench, dishwasher * Internal laundry, large separate dining room/office/TV room * Spacious master retreat with robes, modern bathroom External Features: * Completely private * Easy level access from the street * Surrounded by expansive lawns and gardens, treed outlook * Over-sized single lock up garage with storage on title Location Benefits: * 110m to the bus * 350m to the village shops and cafes * 450m to Turrumurra station * 550m to Turrumurra Plaza and IGA * 1.7km to Pymble Public School * Close to Abbotsleigh and Knox Grammar Ray White, believes that the information contained herein is gathered from sources we deem to be reliable. However, no representation or warranties of any nature whatsoever are given, intended, or implied. Some images may have been virtually staged to showcase better the true potential of rooms and spaces in the home. Any interested parties should rely on their inquiries.