

2/14 Drovers Court, Vermont South, Vic 3133



Unit For Sale

Tuesday, 23 January 2024

2/14 Drovers Court, Vermont South, Vic 3133

Bedrooms: 3

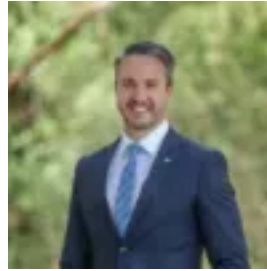
Bathrooms: 1

Parkings: 2

Type: Unit



Matthew Lockyer
0398706211



Joseph Corsi
0398706211

\$730,000 - \$790,000

Presenting a rare offering in this tightly-held, highly sought-after enclave of Vermont South, this impeccably maintained villa unit is certain to appeal to the discerning buyer including downsizers, first-time homeowners, investors, and young families. Nestled in a secluded cul-de-sac at the rear of only two on the block, this hidden gem exudes an unparalleled sense of privacy and security. Set amidst lush, landscaped gardens, this residence showcases an elegant and understated colour scheme and includes central heating and evaporative cooling throughout. A double remote garage offers ample storage space and separate access to the rear of the home. The contemporary kitchen overlooks picturesque, leafy garden borders and boasts extensive storage options including a corner pantry, tiled splashback, and breakfast bar. The open-plan dining and living area exudes a warm and inviting ambiance, seamlessly connecting to the outdoor covered deck and expansive paved courtyard. These outdoor spaces promise year-round entertainment opportunities and serve as a tranquil oasis for outdoor living. With three bedrooms featuring spacious built-in robes, as well as plush new carpeting and window treatments throughout, this residence emanates comfort, style and spaciousness. The bright and airy central family bathroom benefits from an abundance of natural light, a mirrored cabinet, and luxurious soaking tub. Additional highlights include a separate toilet, generous linen cupboard, a laundry room with its own access to the backyard, water tank and established gardens – all of which contribute to the appeal of this home. Close to Vermont Secondary College, Emmaus College, Highvale Secondary College, Livingstone Primary, Weeden Heights Primary and Holy Saviour Primary. Conveniently situated mere minutes from Vermont South Shopping Centre, Vermont South Tram terminus, Bushy Park Wetlands, Dandenong Creek Trail, Eastlink Freeway, and Westfield Knox, this property impresses with its prime location and is an opportunity not to be missed.