

2/14 Mansfield Street, Glebe, NSW 2037

BresicWhitney

Apartment For Rent

Friday, 17 May 2024

2/14 Mansfield Street, Glebe, NSW 2037

Bedrooms: 2

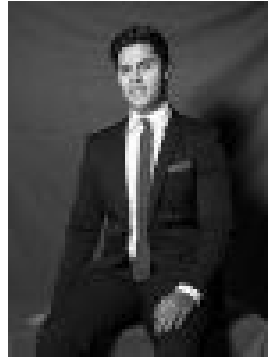
Bathrooms: 1

Parkings: 1

Type: Apartment



Sam Cheli
0293565555



James Meldrum
0415080882

\$1,350 per week

A rare opportunity in Glebe's coveted 'Toxteth Estate', this apartment boasts architectural elegance and charm with contemporary renovations to suit a modern lifestyle. Situated in the exclusive 'Minerva Flats', a Federation-era block of just four units, this top-floor residence is beautifully updated with refurbished kitchen and laundry, polished timber floors and high ceilings throughout, original leadlight windows and solid brass fixtures. Dual front-and-back entry for convenience, with private parking and access to a peaceful communal courtyard and maintained gardens. Connected with high-speed FTB internet and video intercom security. Highlights* Spacious top-floor unit* Private balcony, rear spiral stairs* Great natural light throughout* Ample on-street parking* Built in robes in both rooms* Renovated kitchen, bath, laundry* Dishwasher, gas cooking, air-con* Walk-everywhere city-fringe life* Handy to CBD & transport