

2/15-17 Anzac Parade, Kensington, NSW 2033

Apartment For Sale

Friday, 3 November 2023

2/15-17 Anzac Parade, Kensington, NSW 2033

Bedrooms: 2

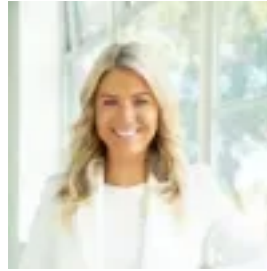
Bathrooms: 1

Parkings: 1

Type: Apartment



Nick Papas
0293142100



Maddison Christie
0293142100

Auction 25th November

This newly revitalized courtyard apartment enjoys an elevated position, providing a sense of seclusion. Situated within a charming Art Deco style building comprising only eight units, this residence is discreetly set back from the street. With the convenience of the light rail right at your doorstep, this property offers seamless access to the city. It boasts an array of outdoor living spaces, and its exclusive private entrance grants it an inviting, house-like ambiance. This spacious two-bedroom apartment presents an attractive alternative to a terrace, featuring a well thought out single-level layout and the added benefit of a dedicated lock-up garage. Located just one block away from the expansive Centennial Parklands, this stylish apartment maintains its timeless appeal with its high ornate ceilings and gleaming polished floorboards. Only a 10-minute journey from the city, this residence offers effortless access to UNSW, Randwick Racecourse, and the East Village shops. + Secure block of eight units with dual street access+ Private entrance, providing a spacious and homely atmosphere+ Serene courtyard adorned with a built-in barbecue area and a bar fridge+ A generous 87m² of living space, complemented by a lock-up garage+ Two spacious double bedrooms, main with built-in-robe+ Stylish living and dining areas, adorned with high ornate ceilings+ Sunroom/study that opens onto an east-facing deck+ Contemporary kitchen with ample storage, stainless steel appliances, and dishwasher+ A private rear wrap-around courtyard and entertainer's deck+ Beautifully polished timber floors and freshly painted interiors+ Enhanced security with an intercom system+ Just 50 meters away from the light rail, ensuring quick access to the city+ Within walking distance to Centennial Park, cafes, and eateries+ Easy accessibility to UNSW and the East Village shops