

2/158 Rattray Road, Montmorency, Vic 3094



House For Sale

Friday, 19 April 2024

2/158 Rattray Road, Montmorency, Vic 3094

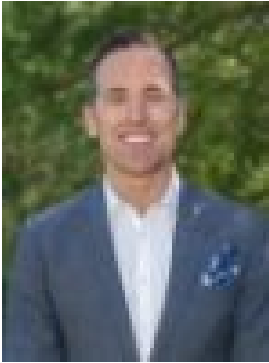
Bedrooms: 3

Bathrooms: 2

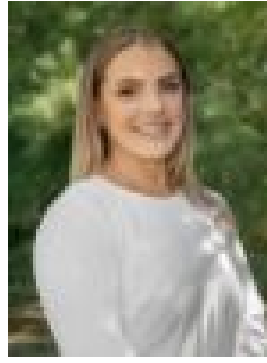
Parkings: 2

Area: 377 m2

Type: House



Scott Nugent
0438054993



Hayley White
0423523926

\$850,000 - \$900,000

EXPRESSIONS OF INTEREST CLOSING TUESDAY 14TH MAY AT 5PM (UNLESS SOLD PRIOR) Elevated and set well back from the road, this captivating weatherboard home welcomes you inside and invites you to stay awhile. The spacious living room is located just off the entry, leading to an open plan family room and dining zone that flow onto a covered deck with a lush treed outlook. The kitchen is central and stylish, featuring a breakfast bar, gas cooktop, a dishwasher and terrific storage. Three robed bedrooms are zoned for privacy, including the master with a walk-in robe and a sparkling ensuite, complemented outdoors by a private backyard with a lawn area and established garden. Highlights include personal heaters, split system air conditioning, solar, new dual roller blinds, attic storage with a pull-down ladder, a shed, under house storage, a double auto garage with workshop space, and off-street parking. In a great location, a short walk from Petrie Park that will take you to Montmorency Train Station, and popular Were Street shops and cafes, with proximity to Montmorency South Primary School and Eltham High (both zoned), Eltham Village, Greensborough Plaza and surrounding walking trails, parks and recreational facilities.