

2/16 Quick Street, Pascoe Vale, Vic 3044

Unit For Sale

Saturday, 9 December 2023

2/16 Quick Street, Pascoe Vale, Vic 3044

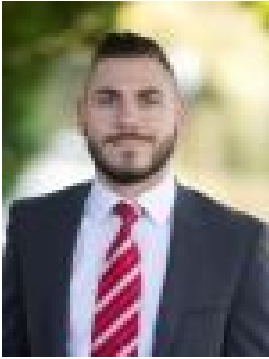
Bedrooms: 2

Bathrooms: 1

Parkings: 1

Area: 185 m2

Type: Unit



Daniel Imbesi
0393060422

\$530,000 - \$580,000

A rare opportunity awaits here! Step into this street facing, freestanding two-bedroom residence and immediately be greeted by the space on offer. Situated on a generous allotment of land measuring 185m² (approx.) and positioned in a convenient Pascoe Vale location, with close proximity to Oak Park station, local bus stops on Devon Road, shops, schools and parklands all nearby, making this one truly desirable home.

PROPERTY SPECIFICATIONS:- Two bedrooms with built in robes, master bedroom containing an air-conditioner- Bi-folding doors off the main hallway open up to the formal lounge with stunning floating timber floors and split-system air-conditioner- A fully appointed kitchen boasting great cupboard and bench space, built in oven, cooktop, rangehood, double sink & breakfast bench- Formal dining area adjoining the kitchen- Central bathroom containing, bath, shower, single vanity and toilet- Full size laundry with external access to the rear courtyard- A low maintenance concreted courtyard offering a handy area to entertain with family and friends- Single lock up garage- Packed with extras including: recently re-painted, new gutters, new fence, security doors, roller blinds, linen closet, off street visitor car space and more

LOCATION BENEFITS:- 1km (approx.) to the Snell Grove shopping strip- 1.2km (approx.) to Oak Park train station- 250m (approx.) to Rayner Reserve & Playground- 400m (approx.) to KW Joyce Reserve & Dog Park- 400m (approx.) to Pascoe Vale Girls College- 900m (approx.) to Westbreen Primary School- Bus Services on Devon Road taking you through to Pascoe Vale & Roxburgh Park- Located within a short distance to many local, parks and schools- Pascoe Vale is located 9km's North of the CBD with terrific City Link, ring road and airport access