

2/17 Janice Road, Glen Waverley, Vic 3150



Unit For Sale

Wednesday, 22 May 2024

2/17 Janice Road, Glen Waverley, Vic 3150

Bedrooms: 2

Bathrooms: 1

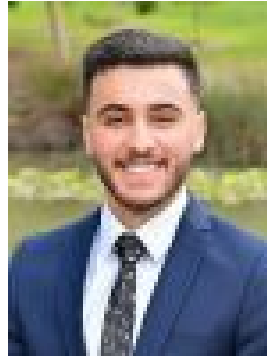
Parkings: 1

Area: 272 m2

Type: Unit



Darryl Wickham
0410554779



Peter Maleki
0401290624

AUCTION

Tailored for easy living and a lifestyle of convenience, this single level unit offers a house-like environment for first home buyers, downsizers and investors with its very own street frontage and prized placement in the Pinewood Primary and Brentwood Secondary Catchments (STSA). Embracing an instantly stylish ambience with polished hardwood floorboards and a light-filled layout, the living, dining and kitchen seamlessly connect and present the benefits of stainless steel appliances, including a Fisher & Paykel dishwasher. Direct access out onto the alfresco deck is enjoyed from here and provides the perfect set-up for entertaining with family and friends while children relish the pleasures of a climbing wall, swing set and play equipment, all surrounded by easy-care landscaped gardens. The highlights of polished floorboards continue into the two robed bedrooms, while the bathroom is stylishly presented and includes a shower, bathtub, stone topped vanity and toilet, supplemented by a discrete Euro laundry. Ensuring the home remains comfortable throughout the year, you'll find split system heating/air conditioning along with the added features of a storage area, single garage and extra driveway parking space. Nestled in a delightful pocket that provides easy access to Pinewood Primary, Brentwood Secondary, Monash Uni, Pinewood Village, Brandon Park Shopping Centre, transport, reserves and parkland plus Monash Freeway. Photo ID required at all open for inspections.