

2/174 West Street, Hadfield, Vic 3046

Sold Unit

Thursday, 12 October 2023

2/174 West Street, Hadfield, Vic 3046

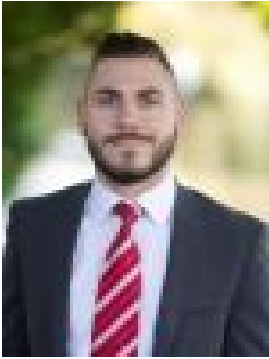
Bedrooms: 3

Bathrooms: 1

Parkings: 4

Area: 348 m2

Type: Unit



Daniel Imbesi
0393060422

\$654,000

Fixed Date Sale Closing Saturday 28th October at 10am A rare opportunity awaits with this spacious single level villa sure to be at the top of the shopping list. Sitting quietly at the rear of the block, on a generous allotment of land measuring (approx.) 348m², with no active body corporate, you'll be amazed at the size on offer of this three-bedroom home that offers a rarity of a double garage. Not to mention all of this is situated only 450m (approx.) to the cosmopolitan West Street shopping strip, with bus services conveniently located nearby, and local schools and parklands all within short walking distance. **PROPERTY SPECIFICATIONS:-** Land size of 348m² (approx.)- Three carpeted bedrooms, two of those with built in robes and ceiling fans- An open plan living/dining zone with a stunning electric fireplace, gas wall heater, split system air-conditioner and sliding door access to the rear courtyard- The kitchen boasts great storage space, 4 burner gas hot plate, built in oven/grill & rangehood, dishwasher, double pantry and breakfast bench- Central bathroom offering semi-frameless shower, bathtub, single vanity and sliding door access to a separate toilet- Full size laundry with external access to the rear yard and built in cupboard- Outdoors, a spacious low maintenance private paved courtyard offering landscaped gardens and access to the garage- A rare double remote entry garage plus additional off street car parking available- Features include: Split system air-conditioner, electric fireplace, gas wall heater, ceiling fans, security doors & side gate access handy for a trailer or access to the rear courtyard **LOCATION BENEFITS:-** 450m (approx.) to cosmopolitan West Street shopping strip- 800m (approx.) to the Hadfield Early Learning Centre- 700m (approx.) to Belle Vue Park Primary School- Bus Services on Bouchier Street taking you through to Gowrie & Glenroy- Located within a short distance to many local, parks and schools- Hadfield is located 12.5km's North of the CBD with terrific City Link, ring road and airport access