

2/18 Henry Parry Drive, East Gosford, NSW 2250



Sold Townhouse

Tuesday, 21 November 2023

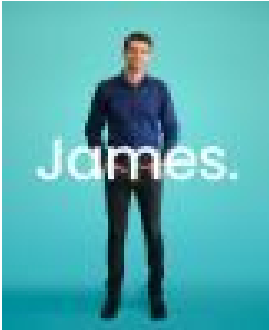
2/18 Henry Parry Drive, East Gosford, NSW 2250

Bedrooms: 3

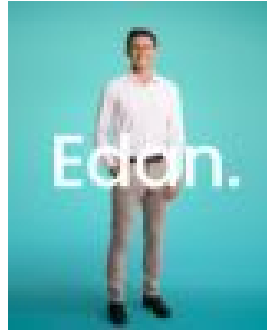
Bathrooms: 2

Parkings: 2

Type: Townhouse



James Keelan
0435714565



Edan Sirone
0411314464

\$700,000

Superbly located in the highly desirable suburb of East Gosford, positioned within a small complex of only three. This townhouse showcases outstanding effortless style while enjoying a sun-bathed orientation. Offering three spacious bedrooms, large open-plan living and dining, an abundance of natural light, and a sense of calm, all while being centrally located and within walking distance of a range of cafes, restaurants, and public transport. Features include:- Located in the desirable suburb of East Gosford, sunbathed aspect.- Generous kitchen with a breakfast bar, stainless appliances, and a dishwasher.- Spacious open-plan living and dining area flooded with natural light.- Living area flows seamlessly to the sunny balcony, downlights, and air conditioning.- Luxurious master suite comes with ample wardrobe space and a private, spacious ensuite.- Two additional spacious bedrooms with built-in robes.- Main bathroom with bath and separate toilet, neutral colour palette. - Freshly painted, air-conditioned, and downlights throughout.- Double lock-up garage with internal access, laundry with courtyard access. Walking distance to an array of gourmet cafes, restaurants, and boutique shopping, and only metres to public transport. This townhouse offers a lifestyle of convenience while providing a contemporary haven. For more information on this property or to arrange a private inspection, please do not hesitate to contact James Keelan on 0435 714 565 or Edan Sirone on 0411 314 464. Council Rates: \$1,110.62pa. Water Rates: \$912pa. Strata Levies: \$3,330pa.