

2/18 Vincent Crescent, Noble Park, Vic 3174



Unit For Sale

Wednesday, 15 May 2024

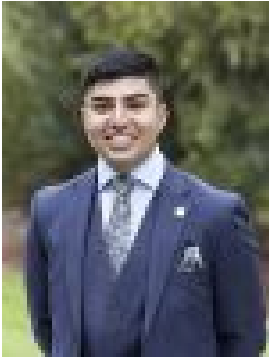
2/18 Vincent Crescent, Noble Park, Vic 3174

Bedrooms: 3

Bathrooms: 1

Parkings: 2

Type: Unit



Talha Mamsa
0432598151



Allison Grant
0395470000

\$550,000 - \$590,000

Online auction Thursday 6th June @ 6pm. For auction registration and link to view, contact Talha Mamsa on 0432 598 151. Experience the epitome of comfortable living nestled in one of Noble Park's popular neighbourhoods. This stunning home with no body corporate is just moments away from local schools and all the conveniences you need. With its spacious layout and modern design, this property is a rare find perfect for first-time buyers, young families, or savvy investors looking to grow their portfolio. Prepare to be enchanted by the expansive living space flooded with natural light, featuring tall ceilings and adorned with sleek tiled flooring throughout. The house is equipped with roller shutters around the perimeter, offering both security and privacy. Entertain in style with the dining room seamlessly connecting to the modern kitchen, complete with a breakfast bar, gas cooking facilities, a range hood, ample bench space and abundant cabinetry for all your storage needs. Discover three generously sized bedrooms, each boasting built-in robes and ceiling fans for ultimate comfort. The main bedroom features a semi-ensuite bathroom, equipped with a basin, shower, bathtub, and a separate toilet. This bathroom also serves the other two bedrooms. Through the laundry, step into your own private oasis—a tranquil and secluded courtyard that offers a serene escape. This delightful outdoor space also provides convenient access to the single electric lock-up garage. Nestled in a central location, this home offers unrivalled convenience. Within walking distance to Harrisfield Primary School, minutes to Noble Park Secondary College, a short walk to Noble Park Train Station and popular restaurants & cafes of Noble Park Central. Only minutes to the Monash and Eastlink on ramps so you can be on your way in next to no time.