

**2/19 Xenia Street, Pimpama, Qld 4209**



**Sold Duplex/Semi-detached**

Monday, 14 August 2023

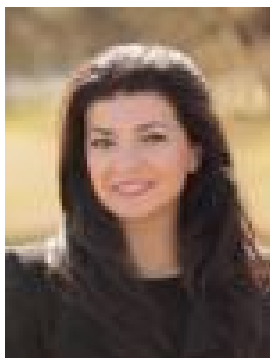
2/19 Xenia Street, Pimpama, Qld 4209

**Bedrooms: 3**

**Bathrooms: 2**

**Parkings: 1**

**Type: Duplex/Semi-detached**



Irma Smith

**\$620,000**

Beautifully built duplex to the highest standards and with the most stunning finishes! This duplex is now vacant and ready for you to move straight into. A perfect purchase for first home buyers or an ideal investment purchase, this home offers open-plan living areas with lots of natural light whilst still providing all the privacy you need. This property is very low maintenance with easy-to-manage, gorgeous established gardens, perfect for the avid gardener to take care of. It also boasts an amazing tiled outdoor alfresco area flowing off the lounge room. What we love about this duplex: \* Open-plan living areas with lots of natural light whilst still providing all the privacy you need \* 3 spacious bedrooms, 2 bathrooms, 1 car garage & 1 open car space \* Master bedroom with walk-in robe and ensuite \* Air conditioned throughout- living area and all bedrooms, as well Day & Night blinds \* Tinted windows to front & side of the house \* Spacious bathroom with bath \* Beautiful kitchen with caesar stone benchtops, dishwasher, and plenty of cupboard space \* Timber Flooring \* Fans to all bedrooms \* Private and fully fenced \* Garage for one car and open space for a second car \* Solar panels \* roof insulation \* Patio Blinds \* Front & Back Security Doors \* No Body Corporate Location: \* Well positioned in the northern corridor - approximately 30 minutes to Brisbane CBD and 20 minutes to Gold Coast beaches; \* 950m from Pimpama City Shopping Centre and minutes from Coomera Westfield Shopping Centre \* Short walk to parks, playgrounds and recreational areas \* Childcare only 750 metres from the property \* Public and private primary and secondary schools minutes away, including TAFE \* Easy and quick access to the M1 (2 mins drive), from both Yawalpah Rd and Attenborough Rd. \* Close to popular Gold Coast theme parks, Coomera Railway Station and Gold Coast Marine Precinct Don't miss out on this beautiful home, it is built to perfection and perfectly positioned in the market and at this price, it will not last! Contact Irma today on 0418 744 470