

2/2 Birkley Road, Manly, NSW 2095

STONE

Sold Apartment

Thursday, 16 November 2023

2/2 Birkley Road, Manly, NSW 2095

Bedrooms: 2

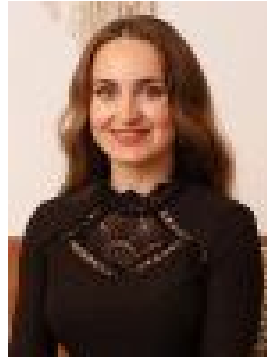
Bathrooms: 1

Parkings: 1

Type: Apartment



Greg Duce
0409749287



Irena Allen
0488609961

Contact agent

Located in the iconic 'Birkley Plaza' security building, just 350m from the beach, this spacious two-bedroom apartment offers an exceptional opportunity to enjoy the Northern Beaches lifestyle, allowing seamless in/outdoor interaction due to floor-to-ceiling glass. Just 450m easy walking distance to the cosmopolitan heart of Manly with thriving restaurants, supermarkets and world-famous Manly Beach only metres from your doorstep. Easy walk to the ferry, making your daily commute to the city or weekend getaways a breeze! - Extensive combined lounge and dining area with Northerly aspect and pleasant leafy outlook, leading to the verandah- Spacious, fully enclosed light & bright verandah, ideal for relaxed entertaining all year round - Neat & tidy kitchen with stone countertop and ample cupboard space- King size master bedroom with verandah access, good size second, both with BIR's - Modern full bathroom with floor-to-ceiling tiles, frameless shower screen and separate toilet- Large separate internal laundry off the kitchen, linen press and extra built-in storage - Single secure underbuilding parking space in well-maintained security complex with a formal entrance, lift access and intercom

Enjoy the ultimate beachside lifestyle and fall in love with the unparalleled convenience of short strolls to everything Manly offers including surf and harbour beaches, cafes and restaurants, shops and boutiques, buses and ferries. Ideal investment opportunity or a fantastic first home.

Disclaimer: The information contained in the advertisement has been obtained from third party sources we deem to be reliable. Stone does not make any representation as to the accuracy of the information, does not accept any responsibility or liability and recommends that any client / interested party make their own investigations and enquiries. All images are indicative of the property only. All dimensions and sizes are approximate and indicative only.