

2/20 Beckham Street, Shepparton, Vic 3630



Unit For Rent

Saturday, 27 April 2024

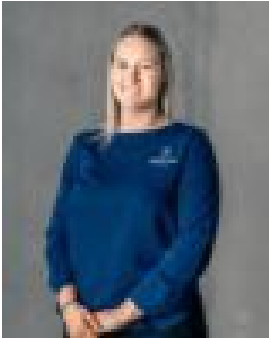
2/20 Beckham Street, Shepparton, Vic 3630

Bedrooms: 3

Bathrooms: 1

Parkings: 1

Type: Unit



Chloe Earle
0358311800

\$420 pw

This well presented townhouse is located south of the CBD and is close to schools, shops and bushland walking tracks. Inside the front door you'll find a great size lounge room with a split system for heating & cooling. The comfortable kitchen/dining area features a brand new electric cooktop and oven and plenty of storage space, containing an electric air conditioner, All three spacious bedrooms feature built-in robes. The bathroom features a shower, bath & vanity and there is a separate laundry & toilet, with the laundry providing access to a private courtyard with plenty of grass. A single lock up garage completes this home. 12 month lease. Not suitable for pets.**** Please send through an online enquiry & we will email you an application form.