

2/20 Erskine Avenue, Reservoir, Vic 3073

Unit For Sale

Friday, 24 May 2024

2/20 Erskine Avenue, Reservoir, Vic 3073

Bedrooms: 3

Bathrooms: 1

Parkings: 2

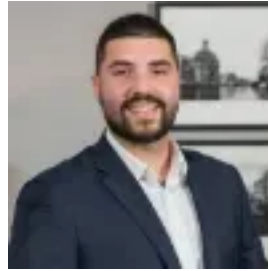
Area: 261 m2

Type: Unit



Tim Yu

0394457000



Jake Popalis

0394457000

\$600,000 - \$660,000

Nestled in a prime locale, this rare gem presents an exceptional opportunity for both homeowners and investors alike. Boasting original charm and meticulous upkeep, this unit offers the flexibility to move in immediately, embark on your dream renovation, or secure a solid investment for the future. Inside, discover three generously proportioned bedrooms, each with built-in robes, ensuring ample storage space for all your needs. The bright central bathroom with a separate shower and bath is designed for convenience and relaxation. Multiple living zones, including a spacious lounge room and a family/meals area, provide versatile spaces for both relaxation and entertainment. The well-appointed kitchen with ample cabinetry space caters to all your culinary needs and preferences. Step outside to uncover a private, low-maintenance courtyard and a single lock-up garage and single driveway space that offers secure off street parking and additional storage options. Ducted heating and split system cooling available to ensure year-round comfort regardless of the season. Just moments away from Summerhill Shopping Centre, offering a plethora of shopping and dining options right at your doorstep. Easy access to public transport, including Tram Route 86 to City Waterfront Docklands, providing effortless connectivity to the heart of Melbourne. Close proximity to schools ensures quality education options for families with children. Adjacent to KP Hardman Reserve, providing lush green spaces and recreational amenities for outdoor enthusiasts. Don't miss out on the opportunity to make this wonderful property your own. Whether you're seeking a comfortable abode to call home or a savvy investment opportunity. Terms: 10% deposit, balance 30/60 days