

2/210 Central Road, Nunawading, Vic 3131



Unit For Sale

Tuesday, 27 February 2024

2/210 Central Road, Nunawading, Vic 3131

Bedrooms: 4

Bathrooms: 2

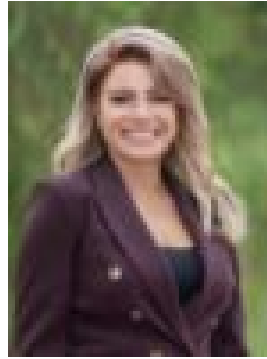
Parkings: 2

Area: 347 m2

Type: Unit



Charles Shi
0423633253



Christine Bafas
0427835610

\$830,000 - \$880,000

Auction Live Streaming via GAVL. Jellis Craig clients have the opportunity to watch live property auctions. Register through www.gavl.com.au and follow the property link: <https://x5u9a.app.goo.gl/ih1pN> Please download the free GAVL app. In a prized location walking distance from Blackburn Lake Sanctuary, this elegant family home presents an outstanding opportunity to secure your family's future in one of the area's premier pockets. The innovative design reveals a welcoming living and dining room featuring modern flooring and wainscot panelling, complemented by a modern kitchen appointed with a stone breakfast bar, quality appliances and excellent storage. Family accommodation includes four spacious bedrooms, including the master with an ensuite, and a central family bathroom that services the remaining bedrooms. Outdoors, a private alfresco courtyard with a covered area provides year-round enjoyment and a great place to spend time with family and friends. Exceptionally positioned moments from Nunawading Christian College, zoned for Mount Pleasant Road Primary School and Mullauna College, walking distance to Blackburn Lake and St Thomas the Apostle Primary Schools, Nunawading Train Station, minutes to Blackburn Station Village, handy to the Eastern Freeway/Eastlink and major shopping centres including Box Hill Central, Eastland Ringwood and Westfield Doncaster.