

# 2/22 Eggleton Close, Singleton, NSW 2330



## Duplex/Semi-detached For Rent

Saturday, 13 April 2024

2/22 Eggleton Close, Singleton, NSW 2330

**Bedrooms: 3**

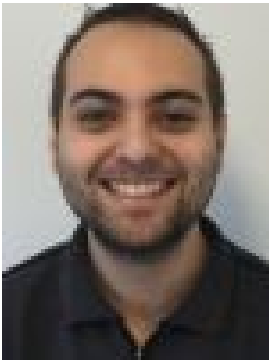
**Bathrooms: 1**

**Parkings: 1**

**Area: 404 m2**

**Type:**

**Duplex/Semi-detached**



Christopher Morgan

1300002775

**\$480 p/week**

🔗 Three Bedroom Duplex 🔗 Welcome to your new home in The Pinnacle! Presenting a charming and well-maintained three-bedroom brick and tile duplex that offers both comfort and convenience. Key Features:- 3 bedrooms with built-in robes- Bathroom with shower and bath- Separate toilet- Separate living and dining areas- Air conditioning and ceiling fans for your comfort- Automatic garage with internal access- Laundry with external access- New oven- Fully fenced, easy care, low maintenance backyard! Located in a peaceful neighborhood, this duplex is perfect for families or professionals seeking a cozy and functional living space. Enjoy the convenience of a modern kitchen with dishwasher, spacious bedrooms, and a lovely backyard for relaxation or entertaining guests. Don't miss out on this opportunity to make this lovely duplex your new home! Contact us today to schedule a viewing. \*\* OUR OFFICE DOES NOT ACCEPT IGNITE/1FORM APPLICATIONS - PLEASE VISIT THE FOLLOWING LINK TO APPLY \*\* <https://www.2apply.com.au/agency?n=Apple>