

2/225 St Kilda Road, Kewdale, WA 6105



Sold Unit

Sunday, 24 March 2024

2/225 St Kilda Road, Kewdale, WA 6105

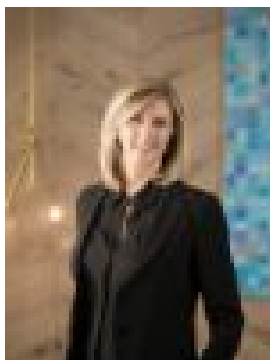
Bedrooms: 1

Bathrooms: 1

Parkings: 1

Area: 51 m2

Type: Unit



Suzanne Brown
0893149888

\$380,000

Welcome to this fabulous 1-bedroom, 1-bathroom unit located at 2/225 St Kilda Road in the sought-after suburb of Kewdale. This property is perfect for first home buyers, downsizers, or investors looking for a low-maintenance lifestyle. The unit features a spacious bedroom, a modern bathroom, and a well-appointed kitchen with ample storage space. The open-plan living and dining area is perfect for entertaining guests or relaxing after a long day. Outside, you will find a carport space for your vehicle and a small courtyard area for outdoor dining or gardening. Located in a convenient location close to shops, schools, parks, and public transport, this property offers the perfect blend of comfort and convenience. Don't miss out on this fantastic opportunity to secure a property in this highly sought-after area.

LOCATION INFORMATION: • 2 minutes to Wicca Reserve • 2 minutes to Willow Lake Park • 3 minutes to Belmont Forum • 5 minutes to Forster Park and Gerry Arthur Athletics Track • 5 minutes to Cloverdale Primary School • 6 minutes to Belmont City College • 7 minutes to Perth Airport • 8 minutes to Optus Stadium

FINANCIAL INFORMATION: • Strata levies: Reserve Fund \$454.50 - Admin Fund \$138.88 per quarter • This property is currently rented at \$480.00 per week until August 2024. Don't let this opportunity slip through your fingers. To view this fantastic apartment please call Suzanne Brown on 0417 916 220. We have, in preparing this advertisement, used our best endeavours to ensure the information contained is true and accurate, but accept no responsibility and disclaim all liability in respect to any errors, omissions, inaccuracies or misstatements contained. Prospective purchasers should make their own enquiries to verify the information contained in this advertisement.