

2/235 Pittwater Road, Manly, NSW 2095

CLARKE
& HUMEL

Apartment For Rent

Tuesday, 9 April 2024

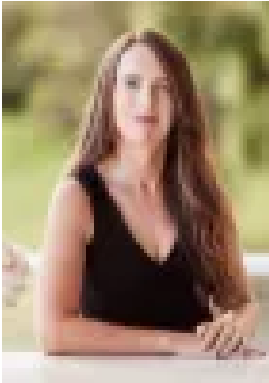
2/235 Pittwater Road, Manly, NSW 2095

Bedrooms: 2

Bathrooms: 1

Parkings: 1

Type: Apartment



Zoe Thackeray
0449167420

\$1,350 per week

As unique as it is spectacular, this beautiful character apartment comes complete with incredible child friendly garden. Designed for the indoor/outdoor lifestyle with refreshingly bright and spacious interiors flowing seamlessly to the rear deck and lawn, it is set to the rear of a boutique building of four within footsteps of Harris Farm and local eateries, and less than a five minute stroll to Queenscliff Beach, Manly Aquatic Centre, and express city buses. * Cleverly redesigned and beautifully crafted semi-like apartment* Sweeping open plan living and dining space with gas fireplace* Glass bi-fold doors open to the rear deck and garden* Fully enclosed private level lawn framed by tropical gardens and outdoor spa* Sleek CaesarStone kitchen with integrated dishwasher and ample storage * Two double bedrooms, main with walk-in robe, second has built-ins* Modern white bathroom with shower over bath, internal laundry* High ceilings, picture rails, ceiling fans and reverse cycle air conditioning * Tranquil side courtyard with storage and a beach shower* Set to the peaceful rear of the immaculate 'Sunshine' building* Common covered alfresco area with barbecue, table and seating* Level stroll to Manly Village, the wharf and buzzing social hub* Car space and pet friendly upon application