

2/25-27 Murray Street, Northmead, NSW 2152



Townhouse For Rent

Saturday, 18 May 2024

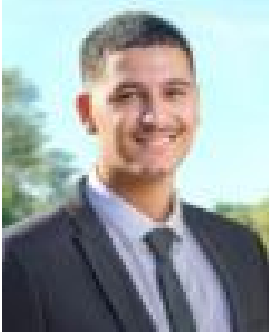
2/25-27 Murray Street, Northmead, NSW 2152

Bedrooms: 2

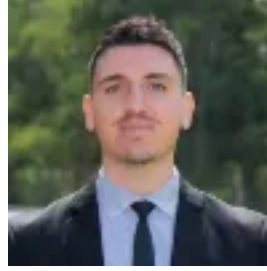
Bathrooms: 2

Parkings: 2

Type: Townhouse



Ali Awick
0298913333



Adriano Tassone
0298913333

\$720 per week

PLEASE REGISTER YOUR INTEREST USING THE BOOK INSPECTION LINK TO ENSURE YOU DO NOT MISS OUT ON THE UPDATES FOR THIS PROPERTY. THOSE NOT REGISTERED MAY MISS OUT ON A VIEWING OPPORTUNITY

THANK YOU This exquisite single-level townhouse boasts a versatile floor plan, designed to prioritize relaxed indoor/outdoor living. Offering an array of light-filled spaces ideal for both living and entertaining, this home is tailored for the modern family. Situated in a convenient location, residents enjoy easy access to the local shopping village, quality schools, and seamless connectivity to Parramatta CBD via Windsor Road, which intersects with Church Street. Key features of the property include: 1. Open-Plan Living and Dining: The spacious combined living and dining area seamlessly connects to a private courtyard, providing an ideal setting for entertainment and relaxation. 2. Vogue Polyurethane Kitchen: A highlight of the home, the kitchen exudes quality with its vogue polyurethane finish, stainless steel appliances, gas cooking, and dishwasher, catering to culinary enthusiasts. 3. Two Spacious Bedrooms: Both bedrooms offer ample space and comfort, complete with built-in robes. The master bedroom is enhanced by an en-suite for added convenience and luxury. 4. Centrally Positioned Bathroom: The centrally located bathroom features a separate bath tub and shower, adorned with floor-to-ceiling tiles, combining style and functionality. 5. Reverse Cycle Ducted Air Conditioning: Enjoy year-round comfort with reverse cycle ducted air conditioning installed throughout the home, ensuring climate control in every season. 6. Gas Hot Water System: Efficiency meets convenience with the inclusion of a gas hot water system, providing reliable hot water supply. 7. Internal Laundry and Ample Storage: The property offers the convenience of an internal laundry facility, coupled with ample storage options to accommodate everyday living needs. 8. Double Lock-Up Garage: Parking is made easy with a double lock-up garage featuring an automatic roller door and internal access, along with an additional spacious storage room for added functionality. This meticulously designed townhouse presents a harmonious blend of style, comfort, and convenience, offering a contemporary lifestyle tailored to modern living requirements. Ray White Parramatta Group - Parramatta | Oatlands | Northmead | Greystanes, its directors, employees & related entities believe that the information contained herein is gathered from sources we deem to be reliable. However, no representation or warranties of any nature whatsoever are given, intended or implied. Any interested parties should rely on their own inquiries.