

2/253 Churchill Avenue, Subiaco, WA 6008



Apartment For Sale

Wednesday, 3 April 2024

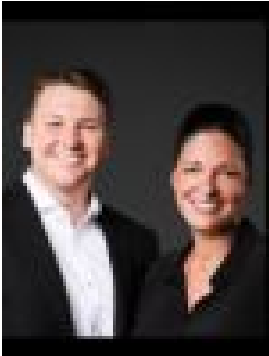
2/253 Churchill Avenue, Subiaco, WA 6008

Bedrooms: 2

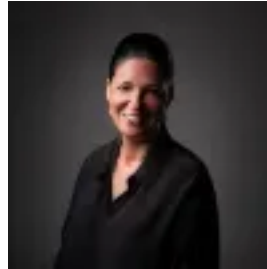
Bathrooms: 1

Parkings: 1

Type: Apartment



Jac Fear Karen Firth Team
0861687471



Karen Firth Jac Fear Team
0861687471

CLOSING DATE SALE

****ALL OFFERS PRESENTED 4PM 23/04/2024 AWST**** Located in the quiet, leafy street of Churchill Avenue, Subiaco, sits this well kept and recently renovated 2 bedroom, 1 bathroom unit. Situated in a small and secure complex of 7 units, this property offers you safety and convenience in the heart of Subiaco, ideal for a young professional couple or small family. The spacious open-plan living, kitchen and dining room is filled with natural light and flows seamlessly to the balcony, perfect for a spot of morning coffee. The kitchen is well appointed with ample bench and storage space, oven, double sink, and cook-top. The main bedroom is generous in size and features a wall of built-in-robos, with direct access to the balcony and semi-ensuite bathroom. The second bedroom is a versatile space that can be transformed to suit your needs. It is also equipped with a built-in-robe for additional storage. Both bedrooms share the main bathroom which has been beautifully renovated, with double vanity, glass walk-in-shower, and separate WC. The laundry is neatly tucked away in an enclosed area within the bathroom. Subiaco Square is within walking distance boasting your local Woolworths, Coles, direct transport routes into the CBD or Fremantle, and additional cafes and bars. Enjoy a morning walk or afternoon run through Kings Park being only 5-minutes away. You are also an 8-minute drive from the Perth CBD, 25-minutes to Perth Airport and 15-minutes from Cottesloe Beach. Additional features: - Split-system reverse cycle air conditioning in living - 1 undercover car bay - Generous balcony space For more information on this property, please contact the Jac Fear | Karen Firth Team today. We look forward to welcoming you. Council Rates | \$2,072.29 pa Water Rates | \$1,325.14 pa Strata Levy | \$807.15 qtr