

2/293 Copperfield Drive, Rosemeadow, NSW 2560



House For Rent

Monday, 22 April 2024

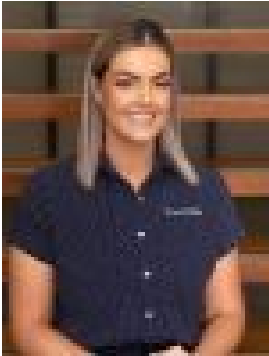
2/293 Copperfield Drive, Rosemeadow, NSW 2560

Bedrooms: 3

Bathrooms: 1

Parkings: 1

Type: House



Paige Eastlake
0424842953

\$520.00 Per Week

This Duplex is situated, just minutes walk from schools, shops, sporting grounds, day cares and public transport, this truly is the perfect location. Boasting three good size bedrooms main with ceiling fan, combined lounge and dining area with split system air con flowing out to covered outdoor entertainment area overlooking low maintenance backyard. Features Include:-☑Solar Panel installed-☑Walking distance to school and local market-☑Walking distance to Day care centre-☑Recently renovated Bathroom-☑Recently renovated floor-☑Built-in wardrobes in two bedrooms-☑Well maintained front and back garden with garden shed-☑Recently painted-☑Separate laundry-☑Garage can be used as a study-☑NBN-☑Ceiling Fans in Dining, lounge and master bedroomNOTE : PLEASE BE SURE TO REGISTER TO INSPECT THIS PROPERTY , IF YOU DO NOT REGISTER WE MAY NOT BE ABLE TO NOTIFY YOU OF ANY CHANGES.