

2/3 Heliconia Street, Mountain Creek, Qld 4557

CENTURY 21

Duplex/Semi-detached For Sale

Thursday, 8 February 2024

2/3 Heliconia Street, Mountain Creek, Qld 4557

Bedrooms: 3

Bathrooms: 2

Parkings: 2

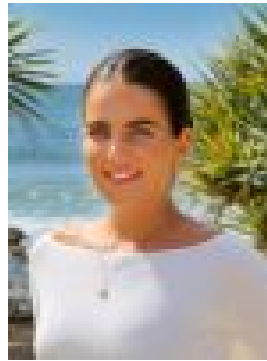
Area: 191 m2

Type:

Duplex/Semi-detached



Lauren Hedgman
0423138605



Layne McLure
0400522926

Auction

Located just 300m to the sought after Brightwater Primary School and only minutes to Brightwater Park, Aldi and all Brightwater has to offer, this stunning duplex is one of the best buys you will find in the area. Offering a superb residential setting that is low maintenance with minimal outgoings of just shared insurance, this is the perfect option for buyers looking for house size living without the price tag. Built in 2011 and offering an impressive 191m² of under roof space, this duplex is larger than many homes in the area and its location is second to none. Arrive home with ease through your double garage complete with additional storage, laundry facilities and secure internal access. Entering inside, the lower level is air conditioned and tiled with a large and modern gloss tile throughout the main living and into a stunning kitchen. Featuring a large 90cm oven with 5 burner gas cooker, ample storage, stone benches with built in breakfast bar, meals will be a breeze in this kitchen. Head outside to a covered patio area, where there is plenty of space to entertain family or friends and being fully fenced, it is a secure space for the pets and kids. There is also a powder room for convenience as well as space enough for a home office or kids homework station downstairs. Heading upstairs, a timber staircase and handrail forms a central feature of the property leading you to three large bedrooms. The master suite is king sized with ceiling fan, a walk-in robe and spacious ensuite. Bedrooms 2 & 3 are along the hall and offer built-in robes and ceiling fans and are serviced by the main bathroom with shower, soaking tub, and separate toilet. Located on a large corner block, unit 2 has it's own separate street front and driveway entry to maximise privacy. Take an afternoon walk along the many pathways the estate has or take a lap around the lakefront to one of the many parks and playgrounds. Located in the Brightwater Primary School (prep – 6) and Mountain Creek High School (7-12) catchments, you are also only a short 10 minute drive to Mooloolaba Beach or Point Cartwright & Buddina Foreshore. * House Sized, 3 Bedroom, 2 Bathroom Duplex With Separate Street Frontage* Built in 2011 With 191m² Under Roof Space* Airconditioned & Open Plan Living Downstairs With Study Nook* Stunning Kitchen With Stone Benches & Gas Cooking* 3 Large Bedrooms Upstairs – Master With Ensuite & Walk-in Robe* Double Garage With In Built Storage & Laundry Facilities.* 300m to Brightwater Primary & Close to Local Parks & Playgrounds