

2/3 Waniora Parkway, Port Macquarie, NSW 2444

House For Sale

Friday, 29 March 2024



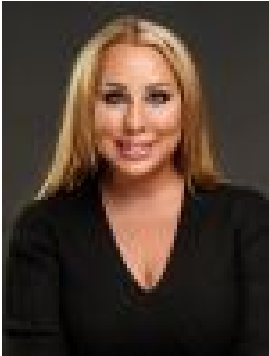
2/3 Waniora Parkway, Port Macquarie, NSW 2444

Bedrooms: 3

Bathrooms: 1

Parkings: 1

Type: House



Corrine Cunningham
0265838606



Tyson Cunningham
0481123047

\$785,000

Hidden away in a peaceful and private setting neighbouring rainforest reserve you'll find this charming gem, the ultimate surprise package in the heart of the sought after Hastings/Shelly Beach area. All level and spacious with a low maintenance outdoor area, for those seeking a connection with nature, you simply won't find a more serene setting than this one. Picture koalas in their natural habitat, an array of colourful birdlife and the soothing sounds of nature. Indoors is warm and welcoming with almost every room capturing an outlook across the rainforest. Discover a generous kitchen featuring an elegant terrazzo feature splash-back, induction cooktop, and gleaming white bench tops, highlighted by coastal style timber and concrete pendant lights. Durable Oak plank floors track throughout, complementing the stunning interior design. The vast open plan dining and living area captures plentiful natural light and a picture perfect view, courtesy of its big windows. Outdoors beckons to a backyard oasis, surrounded by easy care, lush level lawn, and self-sustaining tropical gardens. There are three beautifully appointed bedrooms, each with their own unique features. One of the bedrooms offers access onto a spotless bathroom including a bathtub and laundry space. Side access to an accessible breezeway entry conveniently connects to a modern office space behind the garage, perfect for those seeking a private work zone, artist studio, home hobby workshop or separate entry point to conduct a home business (STCA). With the secure single garage plus off street parking for a caravan or trailer, you simply couldn't ask for more. There's even an outdoor shower for a post surf wash down. It's hard to believe this secluded sanctuary is just minutes stroll from conveniences. Only 150m to the local shopping village and highly regarded Hastings Primary School. World class beaches and coastal walks only 3-minutes' drive away; and an easy 5-minute commute leads into the CBD, or if preferred a bus stops right out front. Perfect for retirees, downsizing, young family, professional couple or coastal Airbnb, this immaculate home is move in ready with absolutely nothing to do but relax, unwind, and enjoy the serenity of your own secluded haven in a tranquil rainforest pocket.