

**2/31 Alamein Street, Noble Park, Vic 3174**



**Apartment For Sale**

Wednesday, 22 May 2024

2/31 Alamein Street, Noble Park, Vic 3174

**Bedrooms: 1**

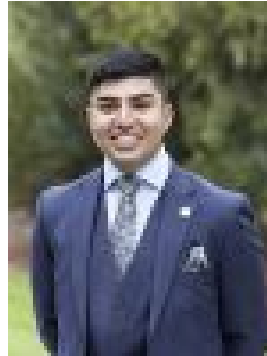
**Bathrooms: 1**

**Parkings: 2**

**Type: Apartment**



Chris Utley  
0395470000



Talha Mamsa  
0432598151

## **Buy Now! \$240,000 - \$260,000**

If you're seeking an ideal entry point into the property market, offering low-maintenance living with convenient access to local amenities, then this contemporary 1-bedroom apartment in the heart of Noble Park is for you. Modern and appealing, this unit impresses with its spacious living area and well-designed floor plan. Step inside to find an inviting open-plan living area, complete with a split system for year-round comfort. The fully equipped kitchen boasts a breakfast bar, gas cooker with rangehood, and plenty of cupboard space. Natural light floods the space through large windows, creating a bright and airy atmosphere. A door from the kitchen leads to a courtyard, perfect for outdoor relaxation. The generously sized bedroom features elegant wooden floors and built-in robes, providing ample storage. The central bathroom includes a single vanity, stand-up shower, bathtub, and integrated laundry space with a toilet. Adding to the convenience is a secure carport with gate access, ensuring your vehicle is safe and easily accessible. Positioned just moments away from Noble Park Railway Station and the vibrant Noble Park Shopping Village, you'll enjoy a plethora of cafes, supermarkets, and shops right at your doorstep. Commuting to Melbourne is a breeze with abundant public transport options and easy access to Princes Hwy and Monash Freeway. This refreshed and ready-to-move-in apartment is a rare opportunity for single-level living with courtyard access. Don't miss out - arrange a viewing today and start your new chapter in this fantastic home!