

2/31 Lorna Lim Terrace, Driver, NT 0830



Sold Unit

Monday, 14 August 2023

2/31 Lorna Lim Terrace, Driver, NT 0830

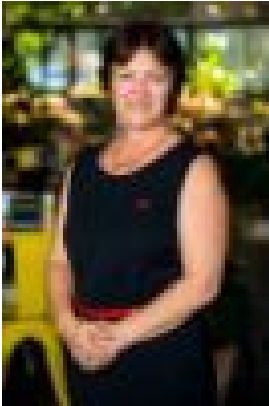
Bedrooms: 2

Bathrooms: 1

Parkings: 2

Area: 81 m2

Type: Unit



Rayna Kirikino
0889487166



Macca Houkamau
0417198527

\$280,000

Positioned within a secure gated complex of 4 units, this property has a tranquil relaxing feel to it that will appeal to the first home buyers, retirees, and investors alike. Everything is already renovated and modernised - nothing needs to be done. The whole complex is secure at street level with electronic gated entry, the driveway leads through to two parking spaces at the front of the unit, one under a shade sail. The front porch offers a warm welcome into the home where an open plan living, dining and kitchen area run centrally offering a hub of the home for effortless entertaining or easy everyday living. The living room is front facing with views over the porch whilst the dining room sits adjacent to the kitchen which offers a dishwasher, electric stove and cooktop, wrap around counters and breakfast bar seating with a modern design and a peep through to the courtyard through the screened back door. The two good sized bedrooms both have carpet flooring, a built-in robe and split air-conditioning. The bathroom is modern with a shower and vanity with storage plus there is a hallway linen press as well. Outside is a sheltered laundry room and a private courtyard with shade sail overhead. Decked outdoor entertaining area plus a handy little garden shed and a gorgeous fishpond. There is side access as well. Body Corporate managed by Whittles, fees are \$863 p/q and the sinking fund \$123 p/q. Located just a short walk to the Palmerston CBD and only minutes to the Palmerston Golf Club and Tavern. Only moments from parklands, local schools, day cares, Marlow Lagoon dog park and BMX along with the Friday night markets and so much more.