

2/32c Henry Lawson Drive, Peakhurst, NSW 2210

AUSREALTY

Sold Villa

Tuesday, 9 April 2024

2/32c Henry Lawson Drive, Peakhurst, NSW 2210

Bedrooms: 3

Bathrooms: 2

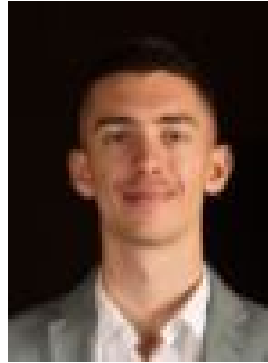
Parkings: 1

Area: 242 m2

Type: Villa



Hani Obeid
0457038716



Peter Kladis
0452141616

\$1,100,000

"Living in this home has brought us immense happiness, with a low-maintenance lifestyle that gives us time to cherish the important things in life. With the supportive neighbours and the all-encompassing community feel, this home has been a source of contentment. We are excited for the next owners to experience the same joy." - Owner- Near-new freestanding villa that masterfully combines a family-oriented design and functional amenities with a small community complex, appealing to families, investors, and down-sizers alike- Three generously sized bedrooms, main bedroom including an ensuite & walk-in robe all equipped with built-in robes - Two stylishly designed bathrooms featuring floor-to-ceiling tiles and sleek tapware, with the main including a separate glass shower and bathtub- Open layout living and dining areas with access to a covered patio, thoughtfully designed for seamless indoor-outdoor flow with an abundance of natural light flooding in- The gas kitchen is complete with stainless steel Smeg and Fisher and Paykel appliances, storage and ample benchtop space with seating- Outdoor area offers a covered patio that invites alfresco dining and outdoor entertainment, coupled with a low-maintenance garden, adding to the convenience lifestyle- This home also offers zoned ducted air-conditioning for year-round comfort, an internal laundry area, secure parking, and plenty of off-street parking- Situated in proximity to schools like Peakhurst West Public School with a swim centre, shops, transport, and parks such as Peakhurst Park, it is perfect for those who seek a balanced lifestyle amidst the conveniences of Peakhurst Water Rate: \$317/quarter approx Council Rate: \$347/quarter approx Strata Levy: \$707 /quarter