

2/33 Melbourne Street, East Gosford, NSW 2250

STONE

Unit For Sale

Friday, 3 May 2024

2/33 Melbourne Street, East Gosford, NSW 2250

Bedrooms: 3

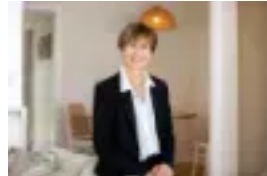
Bathrooms: 2

Parkings: 1

Type: Unit



Christel Renton
0243696000



Helen Hughes
0418220622

Contact Agent

Ideally located just a short walk to East Gosford shops, cafes, restaurants, surroundings schools and parks this townhouse is ideal for convenience and stylish living. The master bedroom and ensuite positioned on the ground floor makes for easy living and suitable to downsizers, families and investors.- Modern kitchen with gas cook top- Stylish finishes throughout- Open plan living and dining flows to outdoor entertaining- Two separate living spaces- Large covered outdoor entertaining area- Three spacious bedrooms, all with built in robes- Master bedroom and ensuite on the ground floor- Large 2nd bathroom upstairs with bath tub- Fans throughout and split system air conditioner- Single lock up garage, auto door and internal access- Short drive to Gosford CBD, train station and the M1 Freeway- 60-90 minutes north of Sydney CBD by road or rail Council rates - \$1,110.62 per year Water and Sewer rates - \$912.89 per year Strata Fees - \$773.58 per quarter