

2/38 Leigh Road, Croydon, Vic 3136



Townhouse For Rent

Monday, 15 April 2024

2/38 Leigh Road, Croydon, Vic 3136

Bedrooms: 4

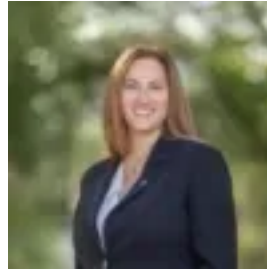
Bathrooms: 2

Parkings: 2

Type: Townhouse



Bill Vlahos
0398706211



Tina Dekas
0398706211

\$750 per week

Peacefully positioned to the rear of the block amidst neatly landscaped grounds, this brand new contemporary townhouse promises an effortlessly impressive lifestyle in an exceptionally central family location. The stylish contemporary kitchen comprises a large stone island benchtop with breakfast bar, abundant soft-close cabinetry, a sleek tiled splashback, and stainless steel appliances including a dishwasher, electric oven and 900mm gas cooktop. Elevated on the carpeted upper level, the spacious master bedroom includes two full sets of built-in wardrobes and a luxe ensuite with floor-to-ceiling tiling, an oversized semi-frameless glass shower and a stone vanity. Two additional upstairs bedrooms are equipped with built-in wardrobes, and are complemented by a fully-tiled central bathroom with stone vanity, a separate bathtub and a separate stone powder room. On the main floor, a convenient fourth bedroom / office provides flexibility for larger families or for those working from home, and is set alongside a ground floor guest powder room, plus a study space with inbuilt desk and shelving. Double glazed throughout and featuring gas ducted heating, split system air conditioning, a full laundry, good inbuilt storage and a lock-up garden shed, the home also includes a remote double lock-up garage with rear roller door and internal access. Set mere metres from buses, and just a short stroll from Dorset Recreation Reserve, Dorset Primary School and Eastfield Park, the home is also within easy walking distance of Swinburne University, Fred Geale Oval, and the leafy Carrum-Warburton Trail. Croydon Main Street and Civic Square shopping and restaurants are in easy reach, with Croydon Station and Melba Secondary College also close by.