

2/38 Loongana Avenue, Shorewell Park, Tas 7320

 Burnie

Unit For Rent

Thursday, 13 June 2024

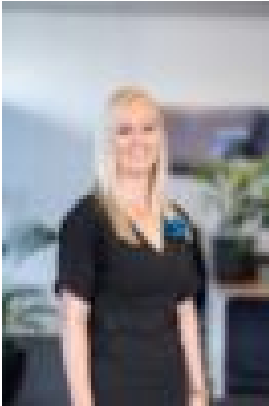
2/38 Loongana Avenue, Shorewell Park, Tas 7320

Bedrooms: 2

Bathrooms: 1

Parkings: 1

Type: Unit



Mikaela Whiteroad
03 6431 4200

\$300 per week

Quiet and convenient location, modern and low maintenance unit is situated in a flat block with a small fenced in yard. This 2 bedroom unit boasts the following features:- Open plan living area- Wall-mounted heat pump- Two Bedrooms with built in robes- Low maintenance secure back yard- Close by to the local schools- Undercover parkingLease details:- 12 Month lease preferred- Sorry, no pets - Available 12th July 2024To apply please use the following link - <https://ire.fyi/pr4zt85>Once your application and supporting documents have been received we will be in touch as your application progresses through the system and to arrange an inspection.