

2-4 Nairana Avenue, Shorewell Park, Tas 7320

 Burnie

House For Sale

Tuesday, 26 March 2024

2-4 Nairana Avenue, Shorewell Park, Tas 7320

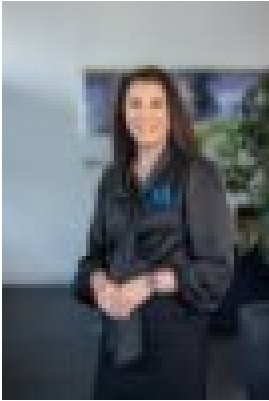
Bedrooms: 3

Bathrooms: 2

Parkings: 3

Area: 1438 m2

Type: House



Selena Elphinstone
0364314200

\$570,000

It's rare to come across a home on two separate titles in the middle of one of Burnie's most sought-after locations but we have, and I recommend you don't delay. The home is light and bright and located on a corner block with much to like. Features include but are not limited to:• Three large bedrooms - all with built in robes - master with ensuite• Split level design with sunken lounge room• Modern interior all throughout and exterior• Separate two bay garage/shed• The block is on a separate title so development is an option (STCA) or continue to use as it currently is• Easy walking distance to schools and shops etc - and a short drive to the hospital and other appealing amenities and shopping precinctThe home has seen value adding updates including a fully renovated and well-appointed kitchen. Parking for multiple vehicles is a bonus and with the layout allowing the master suite to have privacy from the rest of the home there is much to like with this one. Don't delay - call and arrange your inspection today! *Harcourts Burnie has no reason to doubt the accuracy of the information in this document which has been sourced from means which are considered reliable, however we cannot guarantee accuracy. Prospective purchasers are advised to carry out their own investigations. All measurements are approximate.*