

**2/40 Belmore Street, Ryde, NSW 2112**

**Sold Apartment**

Saturday, 18 November 2023

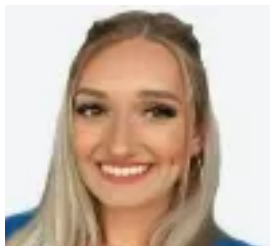
2/40 Belmore Street, Ryde, NSW 2112

**Bedrooms: 2**

**Bathrooms: 1**

**Parkings: 1**

**Type: Apartment**



Savannah Lubke

## Contact agent

Local Amenities: \* Community Hub: Immerse yourself in the vibrant local culture with a mere 5-minute walk to the New Heart of Ryde Multipurpose Community and Cultural Centre. \* Retail Therapy: Indulge in shopping with an 8-minute walk to Top Ryde Shopping Center, while Macquarie Shopping Center, IKEA, and DFO Homebush are just a short 10-minute drive away. \* Recreation and Nature: Explore the great outdoors and recreational facilities, with Parramatta riverside walks & parklands, Sydney Olympic Park, Lane Cove National Park, and Ryde Aquatic Center all within a 10-minute drive. For a day at the beach, Balmoral Beach is a convenient 25-30 minute drive away. Property Features: \* Solid Construction: The apartment is housed in a robust double-brick building with impeccable construction, ensuring peace of mind without structural concerns. \* Small Strata Block: Enjoy greater control and involvement in this small Strata block, fostering a strong sense of community. \* Tranquil Neighborhood: Nestled in a peaceful street adorned with charming houses, there's ample street parking available for your visitors. Interior Highlights: \* Elegant Design: Revel in the beauty of timber floors and freshly painted walls that create a warm and inviting atmosphere. \* Modern Kitchen: Delight in culinary experiences in the luxuriously modern kitchen equipped with a Bosch washer dryer combo, ducted range hood, and ample storage. \* Comfortable Living: The master bedroom features a built-in wardrobe, while the bathroom boasts a rain shower head and a heated towel rack for added convenience. \* Scenic Balcony: Unwind on the balcony and savor the stunning vistas of West Ryde valley and captivating sunsets. \* Abundant Natural Light: All rooms feature large windows with views of lush green trees, facing North, ensuring plenty of natural light and cross ventilation. \* Climate Control: Stay comfortable year-round with the Reverse Cycle A/C unit providing airflow to all rooms. \* Artistic Lighting: Elevate your living space with track lighting, perfect for showcasing artwork or a photo gallery. \* Parking and Storage: Keep your vehicle secure in the locked-up garage and enjoy the convenience of common storage space. Don't miss the opportunity to call this conveniently located and beautifully appointed apartment your new home. Experience luxurious living with easy access to transportation, amenities, and breathtaking views. Contact us today to arrange a viewing! TO ENQUIRE TEXT THIS CODE \*APNU\* to 0472 782 321 and you will receive the advertisers phone number to call direct. Or click 'Get in touch/email agent' to send an email enquiry. Disclaimer. You are advised that you should conduct your own due diligence and not rely on this information, including but not limited to, the property area, floor size, price, address and general property description on the Website. The information has been provided to us by third parties and is published as a convenience to you. We accept no liability whatsoever in connection with the information published.