

2/41 Melbourne Street, Oxley Park, NSW 2760



Sold Townhouse

Wednesday, 6 March 2024

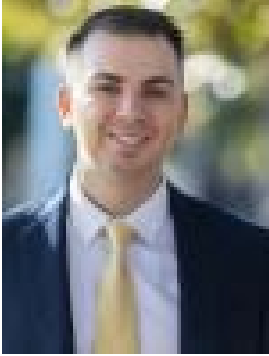
2/41 Melbourne Street, Oxley Park, NSW 2760

Bedrooms: 4

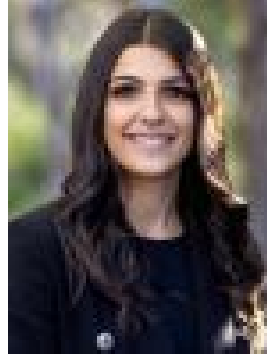
Bathrooms: 2

Parkings: 2

Type: Townhouse



Peter Diamantidis
0296234033



Amber Boumelhem
0296234033

\$650,000

We are pleased to present 2/41 Melbourne Street Oxley Park brought to you by award winning agent Peter Diamantidis. This beautifully presented 4 bedroom townhouse is situated in a well-maintained complex of 4 townhouses and offers a superb living experience. The convenient location provides easy access to Queen Street shops, St Marys Village, schools and St Marys Train Station which is soon to be a Metro stop for the new Airport currently under construction. Whether you're a first-time buyer or an investor, this property is a must-see!

WHAT WE LIKE ABOUT THIS PROPERTY:- 4 spacious bedrooms with built-in robes- Ensuite to master bedroom- Modern bathroom with a third toilet downstairs- Light filled kitchen with gas cooking, dishwasher and ample cupboard space- Open lounge and dining area- Drive thru garage with internal access

Townhouse of this nature are very rare and highly sought after. Do not miss this opportunity! For further information, please contact Peter Diamantidis 0404 051 702 or Amber Boumelhem 0452 669 516.

Disclaimer: The above information has been gathered from sources that we believe are reliable. However, we cannot guarantee the accuracy of this information and nor do we accept responsibility for its accuracy. Any interested parties should rely on their own enquiries and judgment to determine the accuracy of this information for their own purposes. Images are for illustrative and design purposes only and do not represent the final product or finishes.