

2/42 Gisborne Crescent, Reservoir, Vic 3073



Sold Townhouse

Saturday, 13 January 2024

2/42 Gisborne Crescent, Reservoir, Vic 3073

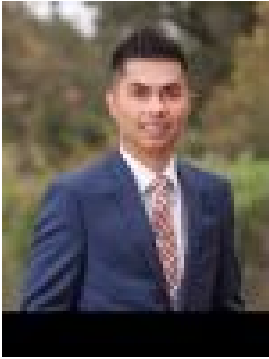
Bedrooms: 2

Bathrooms: 3

Parkings: 1

Area: 725 m2

Type: Townhouse



Keb Nguyen
0434532137



Sam Chan
0394622922

\$735,000

Few properties ooze a wow factor as instantaneous as this gem in the heart of booming Reservoir. Set in an idyllic location, this double storey two-bedroom plus large study townhouse is flawless in appeal, with next level attention to detail, masterful use of light and space and designed for those who love to entertain. The property's façade sets the standard for the internal layout. Beautiful contemporary flooring guides you through the open meals zone seamlessly connected to a modern kitchen (with a premium stone benchtop, premium 900mm appliances and a statement splashback), which in turn opens through glass doors onto a fully decked outdoor area - a true feature of inner-city luxury living. Back inside, a sun-kissed family living area offers a comfortable space to unwind and relax. As you'd expect from a home of such distinction, the fixtures and fittings are of the highest quality, duct heating/cooling with remote control, quality floorboards in the bedrooms and timber staircase, beautiful lighting, intercom, separate laundry and a remote car garage with extra car space adding further appeal. Safe, secure and close to quality schools, Bundoora Park golf course, public transport and great shopping, restaurants and cafes, this stunning townhouse is on-point and on-trend from every angle. With Reservoir featuring as one of Melbourne's most desirable suburbs, now is the time to make a splash!