

# 2/42 Kent Street, Epping, NSW 2121

## Sold Unit

Friday, 20 October 2023

2/42 Kent Street, Epping, NSW 2121

Bedrooms: 2

Bathrooms: 1

Parkings: 1

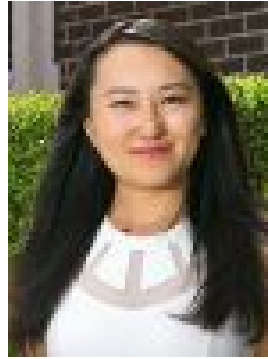
Area: 117 m2

Type: Unit



Kate Pan

0288765888



Grace Zhang

0288765888

**\$846,000**

Set in the sought after Boronia Gardens estate, this lovely updated two bedroom unit offers a peaceful oasis in the heart of Epping. Boasting two private balconies, it is spacious and immaculately presented with stylish modern updates ready for a family to personalise.- Spacious security unit in Bay Tree Court building- Well maintained full double brick building with access to Boronia Park- Spacious living/dining leads to private entertaining balcony- Two bright bedrooms with private balcony and built-in wardrobe- Stylish modern kitchen with dishwasher- Bathroom with bath and separate shower, additional powder room- Located on a raised ground floor, Air conditioning; secure lock-up garage; Internal laundry- Internal building access from lock up garage- Catchment for Epping West Public, Cheltenham Girls' High and Epping Boys High - Just 300m to Coles, 450m to Epping station, shops and cosmopolitan eateries.