

2/49 Canberra Street, Oxley Park, NSW 2760



Sold Townhouse

Monday, 14 August 2023

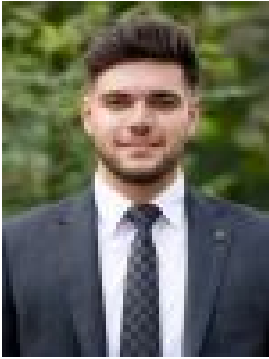
2/49 Canberra Street, Oxley Park, NSW 2760

Bedrooms: 4

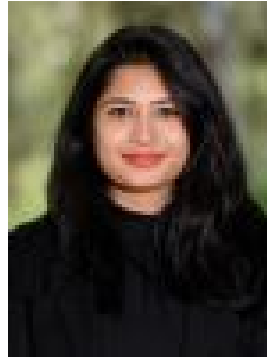
Bathrooms: 2

Parkings: 2

Type: Townhouse



Eli Alkassar
0296234033



Surabhi Chandra
0296234033

\$685,000

Welcome to 2/49 Canberra Street, Oxley Park, presented by the award winning agent Eli Alkassar. This contemporary 4-bedroom townhouse, situated in a meticulously maintained complex, is a testament to modern living. Only 2 years old, the convenient location provides easy access to Queen Street shops, St Marys Village, schools and approximately 4km to St Marys Train Station which is soon to be a Metro stop for the new Airport currently under construction. Perfect for first-time buyers or investors, this property is an absolute must-see! Key Features:- Four generously sized bedrooms, each with built-in robes- Master bedroom complete with an ensuite- Modern U-shaped kitchen featuring stone benchtops, stainless steel appliances, gas cooking, dishwasher and ample cupboard space- Sun-drenched lounge area with open plan dining space- Tiled bathroom with a third toilet conveniently located downstairs- Tiled living areas and plush carpeting in the bedrooms- Ducted air conditioning for year-round comfort- Automatic garage with an additional car space- Covered alfresco area for outdoor entertaining- Low strata fees- Only 2 years old!- Estimated rental potential between \$580 - \$630 per week For further information, please don't hesitate to contact Eli Alkassar on 0451 019 524. Disclaimer: The above information has been gathered from sources that we believe are reliable. However, we cannot guarantee the accuracy of this information and nor do we accept responsibility for its accuracy. Any interested parties should rely on their own enquiries and judgment to determine the accuracy of this information for their own purposes. Images are for illustrative and design purposes only and do not represent the final product or finishes.