

**2/5-7 Moate Avenue, Brighton-Le-Sands, NSW 2216**



**Sold Apartment**

Friday, 1 September 2023

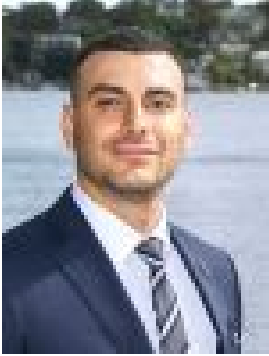
2/5-7 Moate Avenue, Brighton-Le-Sands, NSW 2216

**Bedrooms: 2**

**Bathrooms: 2**

**Parkings: 1**

**Type: Apartment**



Mohamed Elmoubayed  
0409419419

**\$1,250,000**

Designed with quality inclusions and modern finishes, this secure townhouse excellently accommodates a contemporary lifestyle of ultra-convenience. Its prized location is an easy walk to cafés, restaurants, Coles supermarket, buses, schools and parks. - Spacious living, dining and kitchen zone below high ceilings- Effortless transition to verandah and entertaining courtyard- Bright and airy interior with low maintenance tiled flooring- Island kitchen features gas cooktop and premium appliances- Two bedrooms, built/walk-ins, main enjoys ensuite and balcony- Family bathroom appointed with separate shower and bathtub- Ducted air conditioning, alarm system, intercom, lift access- Internal laundry, downstairs w/c, gas bayonet for barbecue- Basement car space, storage room, visitor parking, wash bay- Close proximity to Rockdale Plaza, stations, Sydney Airport and CBD