

2/53 Waterford Street, Kellyville Ridge, NSW 2155

MANOR

House For Rent

Thursday, 30 May 2024

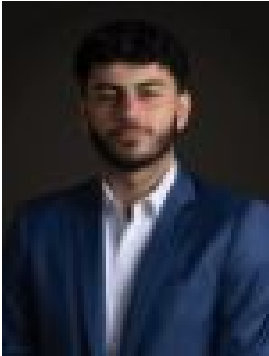
2/53 Waterford Street, Kellyville Ridge, NSW 2155

Bedrooms: 3

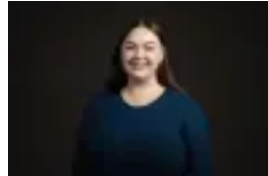
Bathrooms: 2

Parkings: 1

Type: House



MARK MOUSSA
0477004882



AMBER DAVIES
0296395833

\$750 per week

This modern townhouse is ideal for those seeking a spacious home with a low maintenance yard. Located within close proximity to local transport and various amenities, this home will suit many. Features of the property include:- Separate living and dining areas.- Kitchen with an outlook towards the backyard and stainless steel appliances including gas stove, oven & dishwasher.- Tiled flooring downstairs, carpeted upstairs.- Ducted air conditioning throughout.- NBN ready.- Three bedrooms upstairs, each with ceiling fans. Two with built-in robes. Third with access to balcony overlooking backyard.- Main bathroom and ensuite to master bedroom upstairs with shower & spa bathtub.- Internal laundry downstairs with third toilet.- Single lock up garage with internal access.- Flat, grassed backyard.- Close to Rouse Hill Town Centre, Rouse Hill metro station, local & city express bus stops. Please register your interest for inspections via 'email agent' or 'book inspection' button. Registering your details gives you live updates & priority access to all the information required to inspect & apply for this property.