

**2/64 Mountain View Road, Montmorency, Vic 3094**



**Sold House**

Saturday, 11 November 2023

2/64 Mountain View Road, Montmorency, Vic 3094

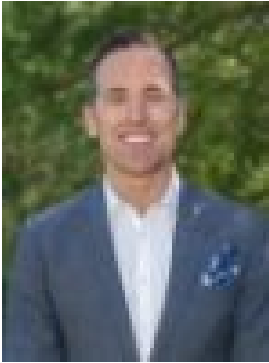
**Bedrooms: 4**

**Bathrooms: 2**

**Parkings: 2**

**Area: 780 m2**

**Type: House**



Scott Nugent  
0438054993



Hayley White  
0423523926

**\$1,240,000**

The key to convenience SOLD by Jellis Craig. Placed quietly at the rear on a substantial 780sqm approximately, this radiant home promises the modern, well-connected lifestyle you've been searching for. The perfect opportunity for your family's next chapter, positioned an easy walk from Were Street shops and cafes, come inside to a light-filled and comfortable lounge and dining room embraced by a cosy woodfire, accompanied by a family room, casual meals zone and a contemporary kitchen boasting a stone breakfast bar, stainless-steel appliances and clever storage solutions. All four bedrooms (master with ensuite) are generous in size, whilst outdoors, a covered deck invites relaxation, overlooking a sunny landscaped backyard featuring a manicured lawn and a fabulous cubbyhouse with a sandpit for the kids. Highlights include an automatic front gate that ensures privacy and security, keyless entry, ducted heating, evaporative cooling, quality timber floors, a garden shed/workshop, watering system and off-street parking. In a winning location walking distance from bus services and Montmorency Train Station, zoned for Montmorency Primary School and Secondary College, and just moments from a variety of local parks, leisure facilities, Greensborough Plaza and Eltham Village.