

2/68-70 Elizabeth Bay Road, Elizabeth Bay, NSW

BresicWhitney

2011

Apartment For Sale

Thursday, 14 March 2024

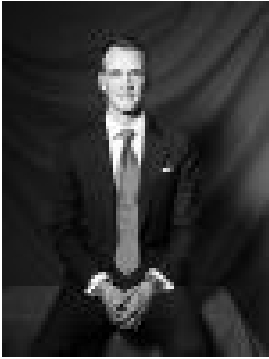
2/68-70 Elizabeth Bay Road, Elizabeth Bay, NSW 2011

Bedrooms: 3

Bathrooms: 1

Area: 84 m2

Type: Apartment



Josh Fleming
0413175060



Christopher Breedon
0455372089

Contact agent

A home of grand ambience in a lobby-level position of The Raymond, one of the area's finest 1920s buildings, this apartment offers easy living with elegant updates throughout. With soaring ceilings, leadlight windows, original period details and gracious style, it enjoys a cosmopolitan location just a short walk to harbourside parks, marinas, tennis courts and fashionable Potts Point cafes, shops and transport lifestyle. Highlights* Rare 3-bedroom design in a 1920s beauty* Level access via domed vestibule & lobby* Unique layout & grand entrance hallway* Spacious open living/dining w/ leafy views* 3 generous bedrooms, 2 w/ large built-ins* Modern stone kitchen w/ shaker cabinetry* Dishwasher, bathroom w/ internal laundry* One of area's original prestige pockets* Walk to cafes, restaurants, harbour & more* Free Report online at bw.com.au