

2/70 Power Street, Hawthorn, Vic 3122



Apartment For Sale

Wednesday, 28 February 2024

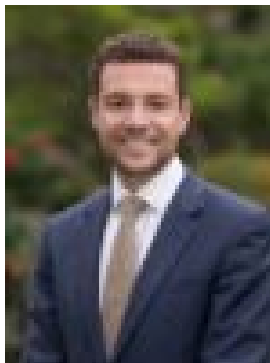
2/70 Power Street, Hawthorn, Vic 3122

Bedrooms: 2

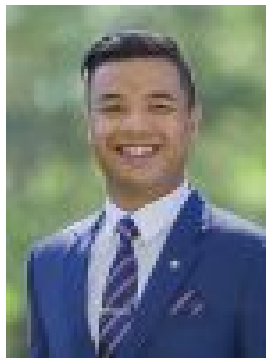
Bathrooms: 1

Parkings: 1

Type: Apartment



James Fitzpatrick
0398105000



Khom Falla
0398105000

Contact Agent

One of only six, this top-floor beauty within the Aylesbury Court complex, is located within moments of Glenferrie Road's culinary and cafe precinct, Hawthorn Station, Grace and St. James' Parks, the Yarra Trail, shops and trams, and has a shared entertaining area at the rear, (perfect for entertaining or bike storage), plus a single garage. Live in elegant Art Deco style and savour the leafy, historic streetscape from the privacy of your own elevated sanctuary. Beautifully reflecting the grace and grandeur of its c1930 origins, the home's exquisite form is centred upon inspired northern living and a chic, contemporary conversion, showcasing designer details throughout the 2-bedroom, 1-bathroom layout. Renovated with respect for divine Deco style, yet catering to today's lifestyle, the stunning interior reveals a striking stone-bench kitchen with elite Westinghouse appliances and a marble-tiled splashback, an adjoining built-in dining nook, and a vogue bathroom with laundry facilities. The lofty 3m decorative ceilings, cool white paintwork and an illuminating northern orientation form an inviting backdrop to the contemporary detail, where modern living is showcased through the inclusion of plantation shutters, reverse-cycle air-conditioning, floor-to-ceiling built-in robes and a combination of hybrid and plush carpets underfoot.