

2/85 Yarranabbe Road, Darling Point, NSW 2027

PPD REALESTATE

Apartment For Sale

Friday, 26 January 2024

2/85 Yarranabbe Road, Darling Point, NSW 2027

Bedrooms: 2

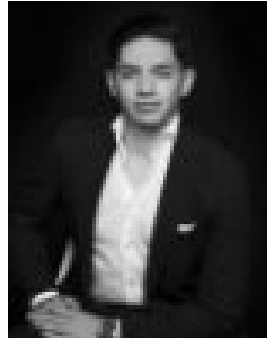
Bathrooms: 1

Parkings: 1

Type: Apartment



Sean Poche
0283551136



Nate Chacon
0283551143

Auction 17 February

Garden apartments in Darling Point are among the most coveted properties in Australia and this cutting-edge designer residence overdelivers in terms of peace, privacy and security at the exclusive northern tip of the peninsula. Unique in the recently upgraded Santina, one of Sydney's most sought-after addresses, the oversized two-bedroom apartment features direct level access from a tranquil entertainer's terrace to sunny manicured gardens on the harbour's edge with no common walls giving it a private house-like feel. Recreated from a shell with a streamlined approach to luxury living, the impeccably appointed apartment's clean lines, high-end finishes and exceptional layout deliver a property of international calibre with level lift access to lock-up garage. Enjoy the ultimate in harbourside living, footsteps to a sparkling heated pool, travertine barbecue terrace and a private jetty with 180-degree views over the world's most beautiful harbour. Soak up the sunshine and harbour splendour with a spectacular uninterrupted vista stretching from the city and Harbour Bridge to Manly and The Heads or stroll down to picturesque McKell Park and Darling Point Wharf. - Private garden apartment on the harbour - Dress-circle address at the peninsula tip - Impeccably renovated full security building - Absolute harbourfront block of only 27 - Secure level lift access, no common walls - A statement in streamlined designer luxury - House-like proportions, flawless interiors - Direct level access to harbourfront gardens - 2 large bedrooms, extensive custom joinery - Main bed with an intimate harbour view - Stylish dining room, smart home lighting - Spacious living with high coffered ceilings - 5m custom media cabinetry, Bose sound - Wall-to-wall Aneeta sashless sliding windows - Flagstone courtyard with automated awning - High-spec kitchen with stone breakfast bar - Stainless steel worktops, Smeg gas cooker - Luxurious bathroom with a bath and shower - Fitted internal laundry and extensive storage - Multi-zoned ducted air, underfloor heating & internal sensor alarm system - Heated pool, bbq terrace and private jetty - Spectacular unobstructed harbour panorama - Lock-up garage, visitor parking, kayak storage - 350m to McKell Park and the city ferry - Walk along the foreshore to the CYC and marina