

2/9 Sunray Court, Croydon, Vic 3136



Townhouse For Sale

Wednesday, 6 March 2024

2/9 Sunray Court, Croydon, Vic 3136

Bedrooms: 3

Bathrooms: 2

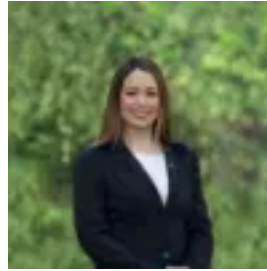
Parkings: 2

Area: 321 m2

Type: Townhouse



William Lyall
0398706211



Jessica Clarke
0398706211

\$770,000 - \$795,000

Enjoying an exceptionally peaceful location at the head of a quiet cul-de-sac, and privately set at the rear of the block, this generous single level brick home offers an expansive open plan layout flooded with natural light. Positioned just a short stroll from Dorset Recreation Reserve, Carrum-Warburton Trail, buses and Dorset Gardens Hotel, and within walking distance of Ruskin Park Primary School and Dorset Golf Driving Range, the home is also set moments from Croydon Station, Main Street and Civic Square shopping, Swinburne University, Eastfield Park and Yarra Hills Secondary College. Featuring airy high ceilings and floor-to-ceiling windows, the generous open plan living room flows out to an inviting timber deck, with ample space for relaxed outdoor dining and entertaining. Adjacent, two lawns are framed by lush established gardens, creating a private and secure retreat with plenty of space for family living. The modern kitchen includes a breakfast bar for casual meals, an electric oven, a gas cooktop, and ample storage with a walk-in pantry. The spacious master bedroom features a walk-in wardrobe and a bright private ensuite with an oversized shower, while two additional bedrooms are each equipped with built-in wardrobes. A central bathroom with a separate bathtub is complemented by a separate W/C, plus a full laundry with good storage and direct outdoor access. Featuring gas ducted heating, split system air conditioning, ceiling fans, and security screen front and rear doors, the home also includes a remote double lock-up garage with rear roller door access to the backyard.