

2/98 Kingsway, Woollooware, NSW 2230



Sold Townhouse

Wednesday, 4 October 2023

2/98 Kingsway, Woollooware, NSW 2230

Bedrooms: 3

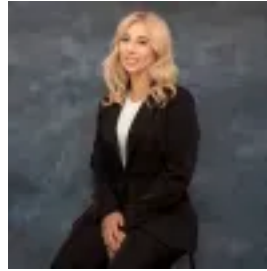
Bathrooms: 2

Parkings: 2

Type: Townhouse



Lush Pillay
0297711177



Sarah Sevdalis
0297711177

\$1,350,000

Red Carpet Event | Cronulla RSL 38R Gerrale St, Cronulla NSW 2230 Tranquilly set in in a boutique block of just six, this impressive double brick townhouse presents a superb opportunity for the investor or first time homebuyer alike. Bright and well presented with nothing more to do, the home could potentially achieve a rental return of approximately \$900.00 - \$950.00 per week. Complete with an open plan living and dining area that flows to an undercover barbecue terrace, modern kitchen, Caesarstone benches and breakfast bar. All bedrooms are doubles, with the main claiming an ensuite, balcony and mirrored built-ins. With additional features that include a double automatic garage with internal entry, ducted air conditioning, guest w/c and balcony, the home has been freshly painted. Just a short 3 minute walk to Wooloware station, it is a 15 min/1.5km walk to the beach and 4.5km to Westfield Miranda. Features include:- Complete with an open living and dining area, BBQ terrace- Modern kitchen, ample storage, Caesarstone benches- Double bedrooms, main with ensuite and mirrored built-in- Ducted air conditioning, guest w/c, balcony, freshly painted- Double automatic garage with internal entry, double brick- 3 min walk to Woolooware station, 4.5km to Westfield Miranda- Conveniently positioned a 15 min/1.5km walk to the beach- Ideal for the first time homeowner or discerning investor