

# 2 Arbour Court, Shepparton, Vic 3630

## House For Rent

Saturday, 11 May 2024

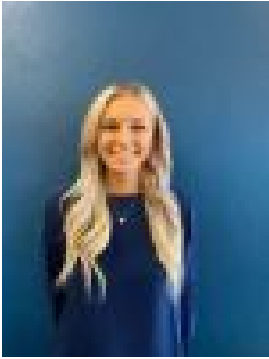
2 Arbour Court, Shepparton, Vic 3630

Bedrooms: 4

Bathrooms: 2

Parkings: 2

Type: House



Paris Morgan  
0358311800

**\$540 pw**

This well presented home is located in the north of Shepparton, close to schools & GV Health. Throughout, there is ducted heating & evaporative cooling. There are two spacious living areas and an open plan kitchen with gas cooking, pantry & a dishwasher. All bedrooms have built-in robes & a walk-in robe and ensuite to the master. The main bathroom has a shower, bath & vanity and a separate toilet and laundry with ample cupboard space. Extra features include an automatic sprinkler system to front & back, large garden shed, large tiled alfresco & a second alfresco/patio at the other side of the house, solar panels, secure low maintenance rear yard with access to Burchier St Primary School & a double garage with remote roller doors. 6- 12 month lease. Pets on application.\*\*\*\* Please send through an online enquiry & we will email you an application form.